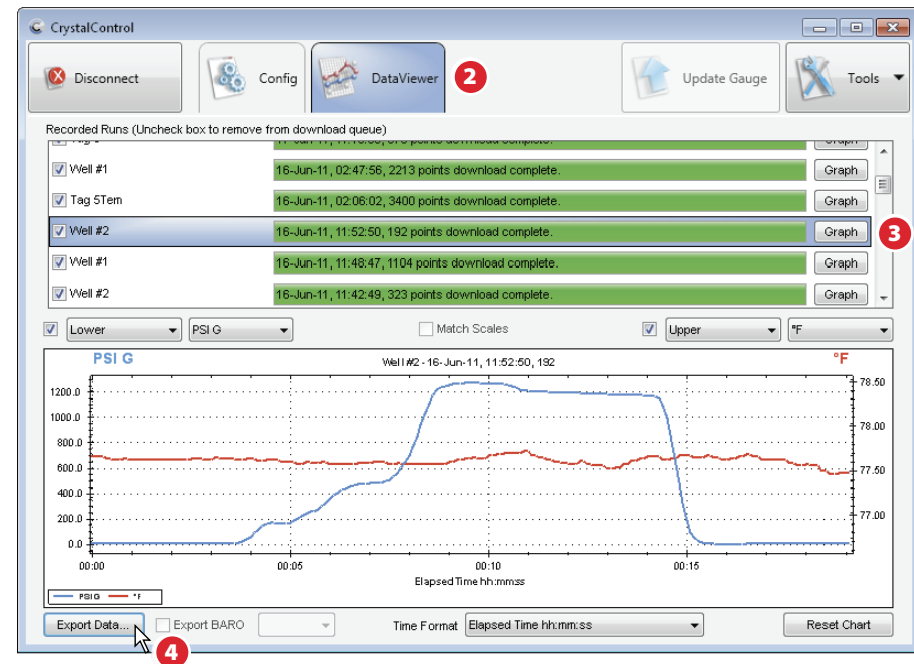


CREATING A SIGNED PDF IN CRYSTALCONTROL

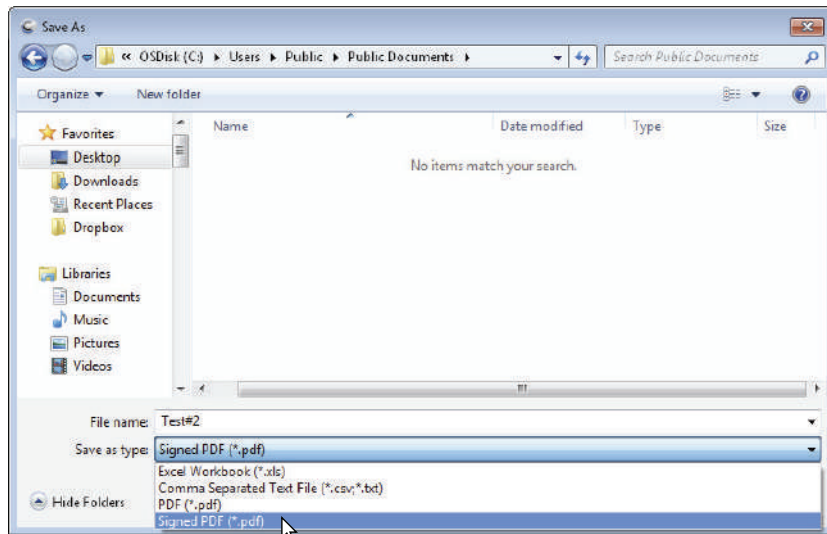
- 1 Connect your nVision to your computer, and open CrystalControl.
Wait for CrystalControl to detect your gauge and click Select Gauge.



- 2 Select the DataViewer tab.
- 3 Click the Graph button to the right of the Recorded Run you wish to export.
- 4 Click Export Data in the bottom left corner of the DataViewer screen.

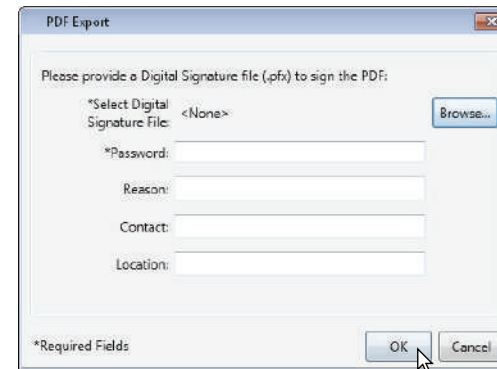


- 5 Navigate to the folder where you wish to save your Signed PDF. From the Save as type drop down, select Signed PDF. Name your file and click Save.

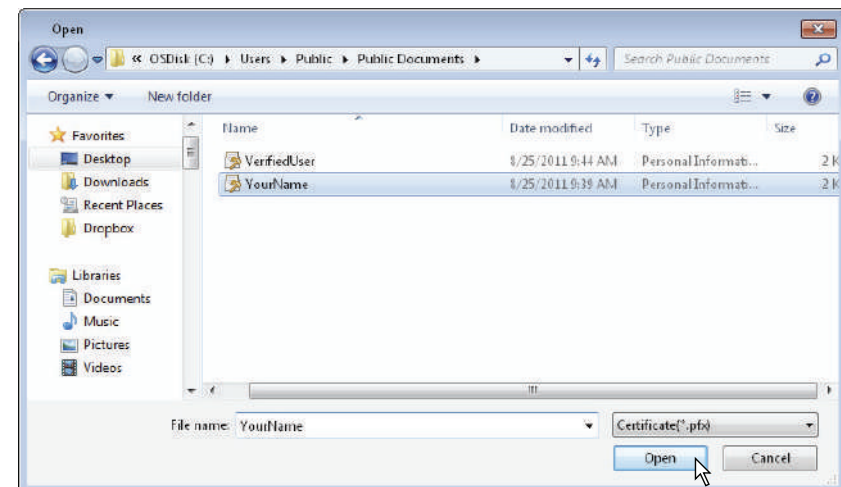


- 6 You will need to locate the Digital ID you wish to use to sign this document. Click Browse to locate your Certificate (.pfx) file. You may also store the location of your Certificate file in CrystalControl's settings.

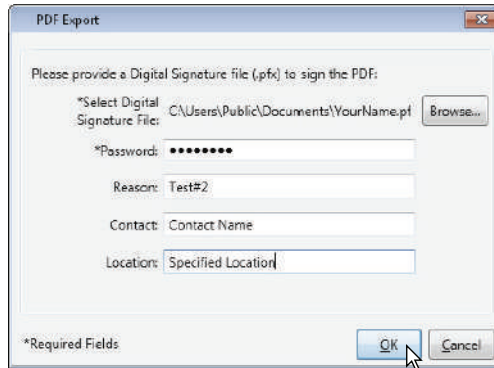
Note: You can create your own signed Digital ID, or obtain one from a 3rd party trusted source. We have created a document which demonstrates the process of creating your own. See [Self Signed Digital ID Application Note](#).



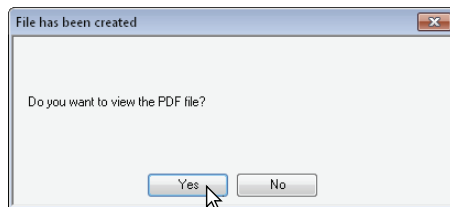
- 7 Locate your Digital Signature file and click Open.



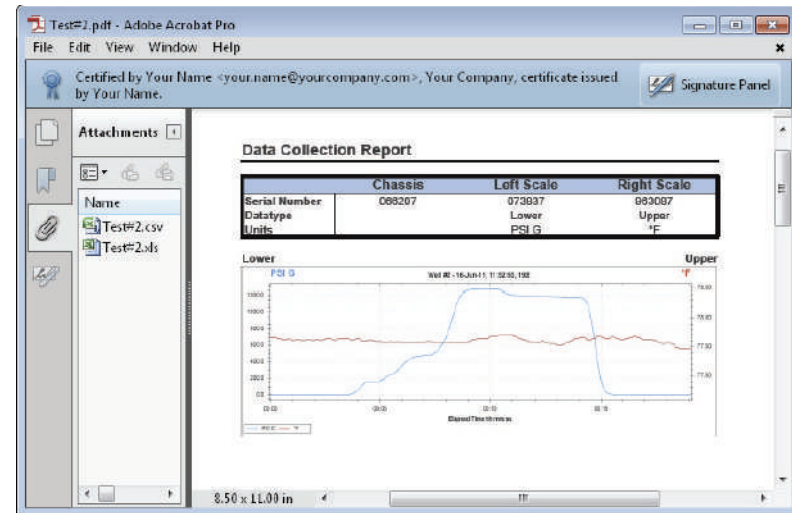
- 8 Fill in your password and other fields. The fields titled Reason, Contact, and Location are optional. You may use them for your own record-keeping. Click OK.



- 9 Click Yes to view your Signed PDF.



- 10 Inside the Signed PDF, click the Signature Panel button to inspect the sender's certificate. Click on the attached read-only Excel files to see the source data.



After exporting, the data inside a Signed PDF produced by CrystalControl cannot be altered. This allows the recipient to verify the authenticity and origin of data received electronically.