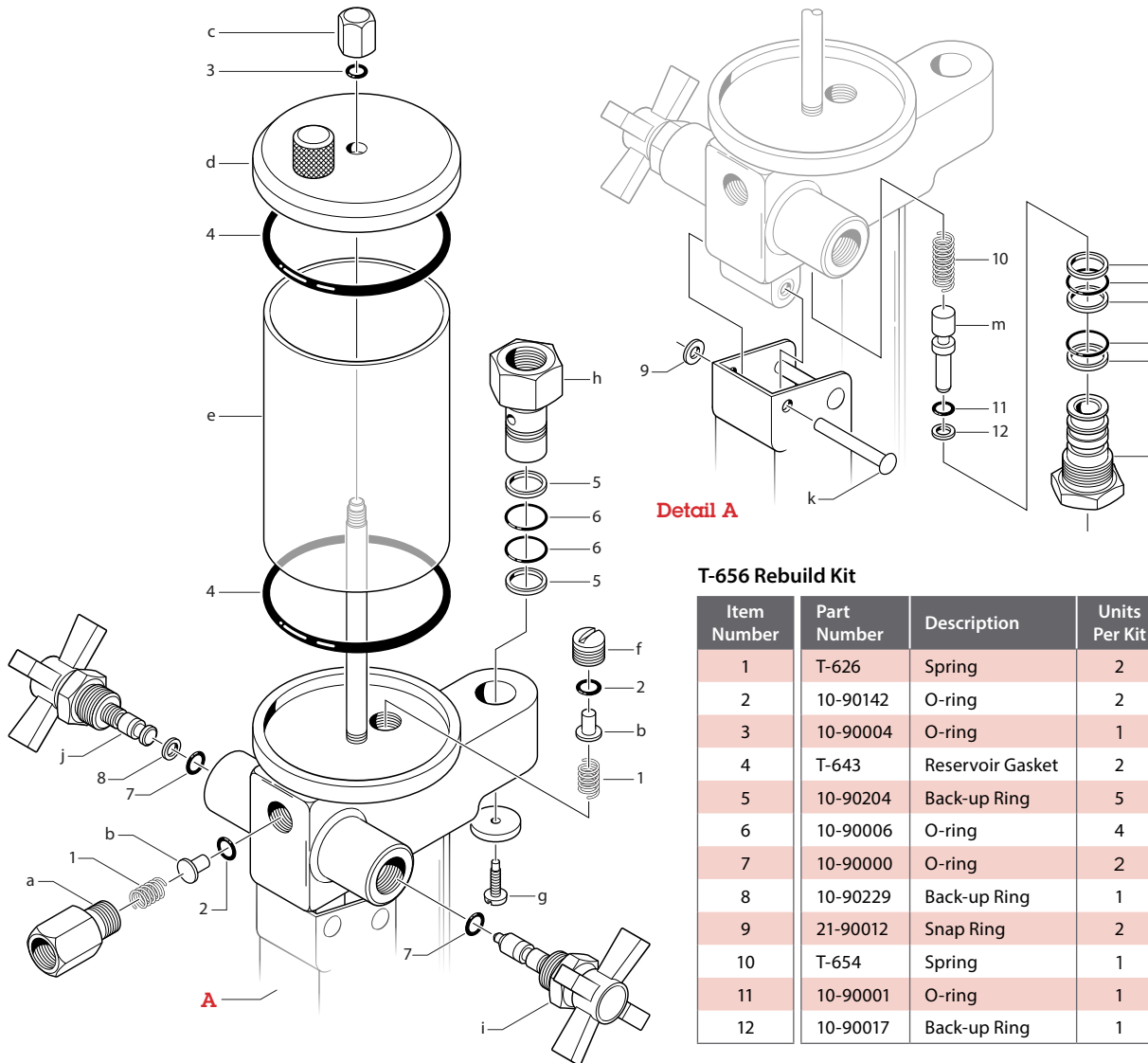


This document is provided as a reference to assist you in making minor repairs to your T-600 Series hydraulic hand pump. If pressure cannot be maintained, follow these procedures to install replacement parts from the T-656 Pump Rebuild Kit.

**1** Remove the hose fitting (a) from the pump body to gain access to the front poppet assembly. Remove the poppet spring (1), poppet (b), and o-ring (2). Examine all the parts for contamination, then wash parts in a solvent such as Freon TF or a Freon substitute. If damaged, replace the O-ring (2) and lubricate with test fluid. Reassemble the parts in reverse order, applying sealant to the hose fitting.



**T-656 Rebuild Kit**

Item Number	Part Number	Description	Units Per Kit
1	T-626	Spring	2
2	10-90142	O-ring	2
3	10-90004	O-ring	1
4	T-643	Reservoir Gasket	2
5	10-90204	Back-up Ring	5
6	10-90006	O-ring	4
7	10-90000	O-ring	2
8	10-90229	Back-up Ring	1
9	21-90012	Snap Ring	2
10	T-654	Spring	1
11	10-90001	O-ring	1
12	10-90017	Back-up Ring	1

**2** Loosen and remove the nut (c) and o-ring (3), then remove the reservoir cap (d), reservoir (e) and two reservoir gaskets (4).

**3** Remove the intake cap (f), then remove the o-ring (2), poppet (b), and poppet spring (1). Examine all the parts for contamination, then wash parts in a solvent such as Freon TF or a Freon substitute.

**4** If damaged, replace the o-ring (2) and lubricate with test fluid. Reassemble the parts in reverse order, applying sealant to the intake cap.

**5** Examine the reservoir gaskets (4), and replace if necessary. Apply Loctite<sup>®</sup> to the gasketing surfaces and reassemble the reservoir.

**6** Loosen the screw (g) to remove the gauge fitting (h), then remove the two back-up rings (5) and o-rings (6). Wash parts in cleaning solvent, then replace the o-rings (6) and back-up rings (5). Note that the concave face of the back-up rings face the o-rings. Lubricate assembly with test fluid, then reassemble the parts in reverse order.

**7** Remove the needle valve assembly (i) and vernier assembly (j). Wash parts in cleaning solvent, and then replace the o-rings (7) and the back-up ring (8).

**8** Remove the snap ring (9) and slide out the front handle rivet (k) to allow the handle to disengage from the pump body. Unscrew the piston sleeve (l) to remove the piston assembly.

**9** Remove the spring (10) and piston (m) from the piston sleeve (l). From the piston, remove the o-ring (11) and back-up ring (12), then from the piston sleeve remove the back-up rings (5) and o-rings (6).

**10** Wash all parts in cleaning solvent, then replace the o-rings (6) and back-up rings (5). Note that the concave face of the back-up rings face the o-rings. Replace the o-ring (11) and back-up ring (12), then lubricate the assemblies with test fluid, and reassemble the parts in reverse order.